



Dynein LC 4 Polyclonal Antibody

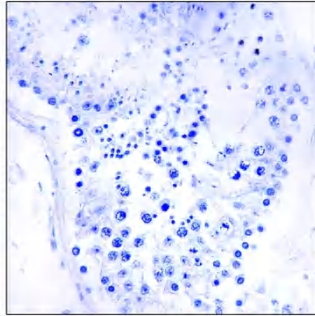
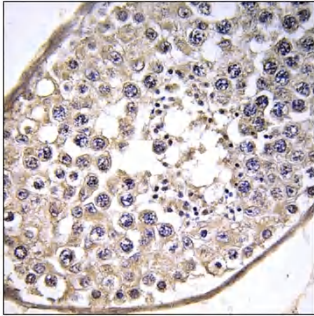
| | |
|----------------------------------|---|
| Catalog No | YP-Ab-03132 |
| Isotype | IgG |
| Reactivity | Human;Mouse |
| Applications | IHC;IF;ELISA |
| Gene Name | DNAL4 |
| Protein Name | Dynein light chain 4 axonemal |
| Immunogen | The antiserum was produced against synthesized peptide derived from human DNAL4. AA range:1-50 |
| Specificity | Dynein LC 4 Polyclonal Antibody detects endogenous levels of Dynein LC 4 protein. |
| Formulation | Liquid in PBS containing 50% glycerol, 0.5% BSA and 0.02% sodium azide. |
| Source | Polyclonal, Rabbit,IgG |
| Purification | The antibody was affinity-purified from rabbit antiserum by affinity-chromatography using epitope-specific immunogen. |
| Dilution | IHC: 1/100 - 1/300. ELISA: 1/40000.. IF 1:50-200 |
| Concentration | 1 mg/ml |
| Purity | ≥90% |
| Storage Stability | -20°C/1 year |
| Synonyms | DNAL4; Dynein light chain 4; axonemal |
| Observed Band | |
| Cell Pathway | Cytoplasm, cytoskeleton, cilium axoneme . |
| Tissue Specificity | Lung,Skin,Testis, |
| Function | function:Force generating protein of respiratory cilia. Produces force towards the minus ends of microtubules. Dynein has ATPase activity.,similarity:Belongs to the dynein light chain family.,subunit:Consists of at least two heavy chains and a number of intermediate and light chains., |
| Background | This gene encodes an axonemal dynein light chain which functions as a component of the outer dynein arms complex. This complex acts as the molecular motor that provides the force to move cilia in an ATP-dependent manner. The encoded protein is expressed in tissues with motile cilia or flagella and may be involved in the movement of sperm flagella. [provided by RefSeq, Dec 2014], |
| matters needing attention | Avoid repeated freezing and thawing! |



Usage suggestions

This product can be used in immunological reaction related experiments. For more information, please consult technical personnel.

Products Images



Immunohistochemistry analysis of paraffin-embedded human testis tissue, using DNAL4 Antibody. The picture on the right is blocked with the synthesized peptide.